



HEALTH DISTRICT



THIRD QUARTER REPORT 2025

999 East Main Street * Ravenna * Ohio * 44266
330-296-9919 * www.portagehealth.net

Who We Serve

Serving the Townships of:

Atwater, Brimfield, Charlestown, Deerfield, Edinburg, Franklin, Freedom, Hiram, Mantua, Nelson, Palmyra, Paris, Randolph, Ravenna, Rootstown, Shalersville, Suffield, Windham

Serving the Villages of:

Garrettsville, Hiram, Mantua, Mogadore, Sugar Bush Knolls, Windham

Serving the Cities of:

Aurora, Ravenna, Streetsboro



Mission

To promote public health, prevent disease, and protect the environment, utilizing leadership and partnership to empower individuals and communities to achieve optimal health.

Vision

Healthy People. Healthy Environments.
Healthy Communities.

Values

Accountability, Communication, Dedication,
Ethics, Innovation

Board of Health Members

Ms. Lucy Ribelin, City of Ravenna, President

Mr. James Bierlair, Vice-President

Ms. Amy Everett, Member

Mr. Charles Delaney, Member

Mrs. Linda Grimm, City of Streetsboro, Member

Mr. Brock Kertoy, Member

Ms. Diana Clarke, Member

Dr. Philip Keyser, City of Aurora

Board of Health Duties:

As established by Ohio law, our eight-member Board of Health functions as a policy, governance, advisory, and regulatory board and provides oversight of major financial and programmatic decisions.

The Board of Health provides oversight for the health of the public, the prevention or restriction of disease, and the abatement of nuisances.

The Board of Health members are appointed by elected officials who serve on the District Advisory Council or by the city they represent.

The Board of Health meets on the 3rd Tuesday of each month at the Portage County Health District in the Basement Conference Room.

Portage County Combined General Health District Employees

Administration

Becky Lehman, MPH, MPA, CHES, Health Commissioner
Dr. Mark Arredondo, MD, Medical Director
Sarah Meduri, BSPH, SHRM-CP, PSHRA- CP, PIO, Administrator
Christina M. Jewell, Administrative Assistant
Olivia Card, MA, Epidemiologist

Finance

Branden Burns, MBA, Director of Finance
Lisa Miley, Grants Fiscal Manager
Maria Gill, Account Clerk
Julia Sykes, AAS, Account Clerk

Community Health

Amy Cooper, BSND, RD, LD, Director of Community Health
Joshua Sexton, BSPH, Accreditation Coordinator
Kimberly Plough, MEd, CHES, Health Educator
Kylee McCracken, BS, Health Educator
Robert Walker, BA, Public Health Emergency Preparedness Coordinator
Rebecca Barreca, MSN, RN, Director of Nursing Programs
Kirsten Orr, BSN, RN, Public Health Nurse
Morgan Cole, MHHS, BSN, RN, Public Health Nurse
Philesia Condor, Clerk
Danielle Steighner, RD, LDN, WIC Supervisor
Rachael Stratton, BA, CLC, Breastfeeding Peer Helper & Clinic Assistant
Briana Robison, MS, MPH, RD, LDN Health Professional 2
Cynthia Hilbish, RDN, LD, CLC, WIC Supervisor
Lindy Goist, BSAS, RD, LD, CLC, Health Professional 3
Amy Hall, BS, RD, LD, Health Professional 2
Renee Howe, Clinic Assistant
Victoria Caddell, Clinic Assistant
Julie Seifert, BHE, CLC, Health Professional 1
Abbie Fitch, BSAS, LD, Health Professional 2
Anita Mackey, Clinic Assistant
Amanda Casto, Clinic Assistant
Melissa Colella, BS, Peer Helper
Amelia Donovan, Clinic Assistant

Environmental Health

Justin Rechichar, MPH, MHHS, REHS, Director of Environmental Health
William Duck, BA, REHS, Environmental Supervisor
Natalie Menke, BA, REHS, Environmental Supervisor
Amos Sarfo, MS, REHS, Stormwater Coordinator
Emily Speck, BS, Registered Environmental Health Specialist, GIS Coordinator
Leah Luli, MPH, Registered Environmental Health Specialist
Samantha Mellott, BSPH, Registered Environmental Health Specialist
Jim Meyer, BS, AA, Environmental Health Specialist in Training
Nicole Lipchik MPH, Environmental Health Specialist in Training
Cassie Clouser, MSSR, Environmental Health Specialist in Training
Seth Nolte, BS, Environmental Health Specialist in Training
Brandon Santiago, BASc, EHSIT, Environmental Health Specialist in Training
Aaron Belknap, Plumbing Inspector
Debbie Wine, Environmental Health Clerk
Veronica Victoria, Environmental Health Clerk
Hannah Dean, Seasonal Worker

*Portage County Combined General Health District (PCCGHD) provides comprehensive public health services throughout Portage County (*excluding Kent City).*

**PCCGHD does provide Private Water and Septic System Evaluations by contract in Kent City. PCCGHD also provides WIC Services, Cribs for Kids Program, Child Fatality Review, Children with Medical Handicaps Program and Project DAWN Program to Kent City.*

ADMINISTRATION & FINANCE



The Administration and Finance Divisions continuously strive to support and ensure the Health District is meeting the 10 Essential Services of Public Health. This is achieved through public health workforce planning, workforce development, financial and strategic planning.

The Portage County Health District, in partnership with the Akron-Canton Regional Foodbank, organizes monthly pop-up food pantries on the **first Thursday** of each month from **1:00 PM to 3:00 PM** at the Portage County Health District, located at 999 East Main Street, Ravenna, Ohio.

The pantry serves as a public health initiative and emergency preparedness exercise, advancing health equity and access to essential resources. Our pop-up pantry is the **largest pop-up pantry across eight counties**.

The program also provides vital public health services on-site, including vaccinations, WIC support, and community partners onsite, strengthening community resilience and preparedness.

676

Families Served
Third Quarter

Portage County Health District's **Thrive Together Farmers' Market** took place every Tuesday from June through September from 3-6 PM. The community enjoyed fresh local produce, handmade goods, family-friendly educational activities, and free yoga at 6:00 PM.



POP-UP FOOD PANTRY

The First Thursday of Every Month
1:00pm - 3:00pm

COME TO

Fresh Foods Every Month!

Location:
999 East Main Street
Ravenna, Ohio 44266

Visit Our Website
www.portagehealth.net

Find Food Resources Easily with Our New Dashboard!

Helping Portage County residents access nutritious food options.

Scan to Find Food Near You

Introducing the Food Resource Dashboard

- Find Food Help Near You!
- Search food pantries, farmers markets, WIC & SNAP.
- View locations on an interactive map with contact info.
- Filter by day to see what's open today!

1 in 7
U.S. residents are at risk of hunger

Portage County Health District
999 E Main St, Ravenna, OH 44266
330-296-9919 | www.portagehealth.net

Thrive Together Farmers' Market

&

Tasty Tuesdays

Every Tuesday until September 9

- Farmers' Market - 3:00-6:00 pm
- Tasty Tuesday - 12:00-5:00 pm

On the Front Lawn @
Portage County Health District
999 East Main Street
Ravenna, OH

www.portagehealth.net

ENVIRONMENTAL HEALTH

The Environmental Health Division focuses on prevention of disease through sanitation, safe food and water, proper disposal of waste, and promoting safe and healthy environmental conditions throughout Portage County.

WATER QUALITY PROGRAMS



801
Food Safety
Inspections



1
Tattoo/Body Art
Inspections



41
Solid Waste Inspections &
Nuisance Complaints



37
Camp
Inspections



0
School
Inspections



107
Swimming Pool &
Spa Inspections



144
Mosquito Site
Assessment and
Trappings



Home Sewage Treatment Systems

79 HSTS Permits Issued
144 HSTS Rough/Final Inspections
48 O+M Inspections



Private Water Systems

43 PWS Permits Issued
39 PWS Field Inspections
41 PWS Bacterial Water Sample Requests



Waste Water Nuisances

14 inspections/Consults
40 Data Collection/File Review/Reports



Plumbing Program

128 Residential Inspections
37 Commercial Inspections
2 Clearwater Inspections
7 Re-inspections



Stormwater Program

40 ID & Verification Inspections
74 Dry Weather Screenings
4 IDDE Insp. & Surface Water Sampling



Semi-Public Commercial Wastewater

134 Inspections
9 Consultations



Point of Sale Program

56 Inspections/Consultation/File Review



3
New Data
Visuals
Implemented

+

163
STS Files Updated
to GIS Map

COMMUNITY HEALTH

The Community Health Division strives to help bridge the gap between Portage County residents and health care providers, social service agencies, community organizations, etc. in the provision of community health services such as immunizations, injury prevention programming, harm reduction programming, communicable disease investigations, environmental health education, and emergency preparedness.

INJURY PREVENTION



23

Convertible/Booster Seats Distributed



6

Cribs For Kids/
Pack n' Plays Distributed



469

Participants in SAIL (Stay Active & Independent for Life-Falls Prevention)



684

Project DAWN (Narcan) Kits Distributed



1,114

People Trained in Project DAWN



14

Prevention, Retention, Contingency (PRC) Family Support Milestones Completed

COMMUNICABLE DISEASE



226

Child & Adult Immunizations



243

Communicable Disease Investigations

COMMUNITY PROGRAMS & SERVICES



210

monthly average
Complex Medical Help Clients



63

Animal Bites/Rabies Exposures



20

Emergency Preparedness Trainings & Events

WOMEN, INFANTS, & CHILDREN (WIC)

The Women, Infants, & Children (WIC) program is an Ohio Department of Health grant funded program that provides nutrition education & supplemental food program for women, infants, and children. The program provides highly nutritious foods, breastfeeding support, nutrition education, and connects families with other area resources.

WIC serves income eligible pregnant, breastfeeding and postpartum women, infants, and children to age 5.

PCHD administers WIC services in Portage and Columbiana County.



1,912

Participants Served
in Portage County WIC



24

Community Outreach &
Education Programs



1,623

Participants Served
in Columbiana County WIC



13

Nutrition Education
Programs

BREASTFEEDING BENEFITS:

Breastfeeding Mothers

- Reduces their risk for:
- Ovarian cancer
 - Breast cancer
 - Type 2 diabetes

Breastfed Infants

- Have a reduced risk of:
- SIDS
 - Lower respiratory infections
 - Type 2 diabetes
 - Asthma
 - Obesity

Workforce & Environmental

- Infants have less illness so mothers miss less work
- Less trash & plastic waste compared to formula & bottle supplies



1,357
Breastfeeding
Education & Support



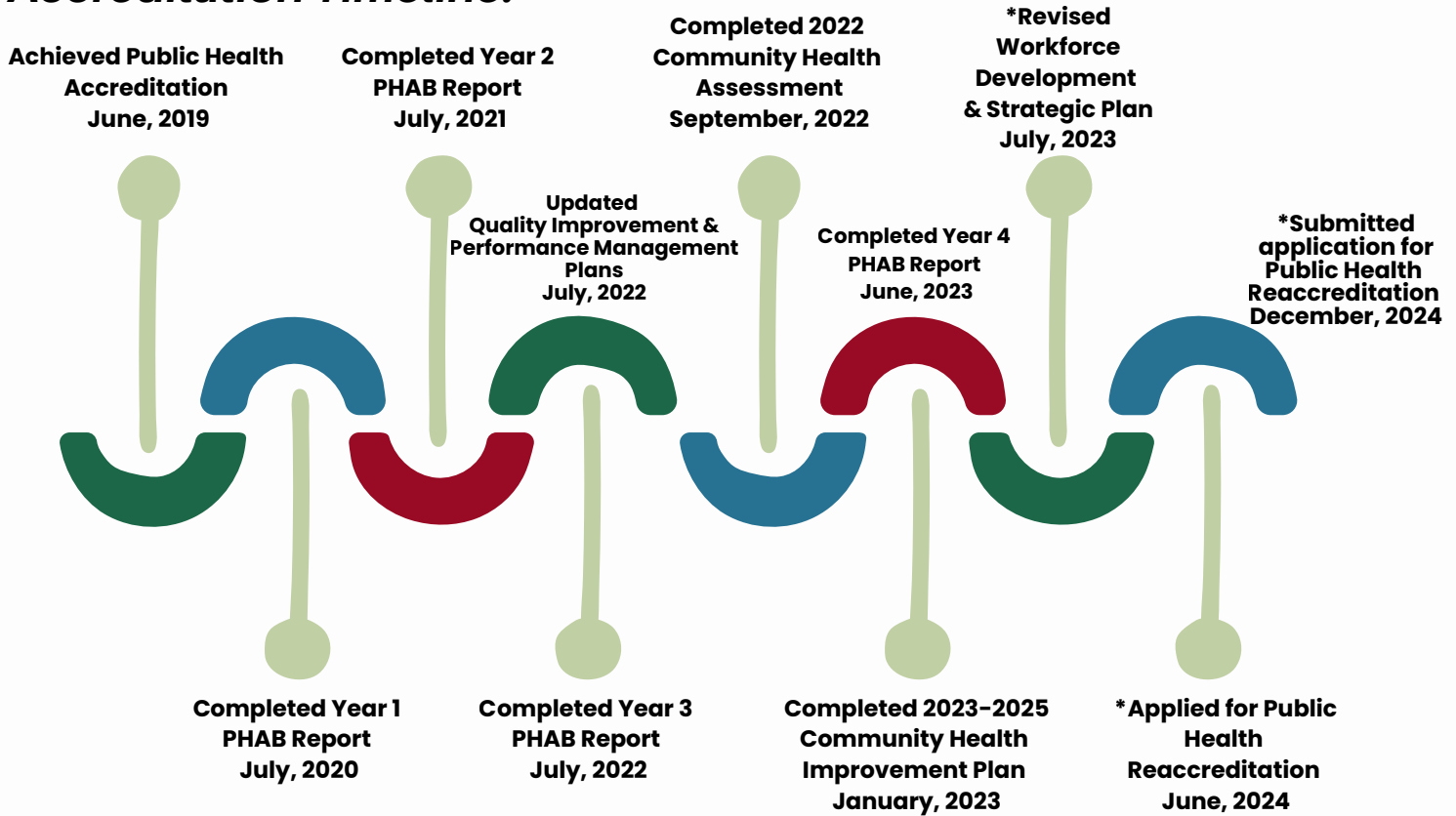
76.38%
Breastfeeding
Initiation Rate

WIC supports all mothers and babies, regardless of their feeding decision. Staff are trained to promote and protect breastfeeding as the optimal feeding method for all infants. WIC staff provide the necessary resources and referrals to assist mother and baby in achieving their breastfeeding goals.

PUBLIC HEALTH ACCREDITATION

Public health accreditation measures a health district's performance against a set of nationally recognized, practice-focused and evidence-based standards. It focuses on the continual development, revision, and distribution of public health standards.

Accreditation Timeline:



COMMUNITY HEALTH IMPROVEMENT PLAN PRIORITIES



Chronic Disease



Family, Pregnancy, Infant, & Child Health



Mental Health, Substance Use, & Addiction

Awarded National Accreditation for Public Health Excellence!



HEALTH DISTRICT

