

# PORTAGE COUNTY COMBINED GENERAL HEALTH DISTRICT



## FIRST QUARTER REPORT

**JANUARY - MARCH 2024**

## Who We Serve

### Serving the Townships of:

Atwater, Brimfield, Charlestown, Deerfield,  
Edinburg, Franklin, Freedom, Hiram, Mantua,  
Nelson, Palmyra, Paris, Randolph, Ravenna,  
Rootstown, Shalersville, Suffield, Windham

### Serving the Villages of:

Garrettsville, Hiram, Mantua, Mogadore,  
Sugar Bush Knolls, Windham

### Serving the Cities of:

Aurora, Ravenna, Streetsboro



## Mission

To promote public health, prevent disease,  
and protect the environment, utilizing  
leadership and partnership  
to empower individuals and communities to  
achieve optimal health.

## Vision

Healthy People. Healthy Environments.  
Healthy Communities.

## Values

Accountability, Communication, Dedication,  
Ethics, Innovation

## Board of Health Members

Ms. Lucy Ribelin, President  
Mr. James Bierlair, Vice-President  
Dr. Howard Minott, Member  
Ms. Amy Everett, Member  
Mr. Charles Delaney, Member  
Mrs. Linda Grimm, Member  
Mr. Brock Kertoy, Member  
Ms. Diana Clarke, Member

## Board of Health Duties:

As established by Ohio law, our eight- member  
Board of Health functions as a policy, governance,  
advisory, and regulatory board and provides  
oversight of major financial and programmatic  
decisions.

The Board of Health provides oversight for the  
health of the public, the prevention or restriction of  
disease, and the abatement of nuisances.

The Board of Health members are appointed by  
elected officials who serve on the District Advisory  
Council or by the city they represent.

The Board of Health meets on the 3rd  
Tuesday of each month at the Portage  
County Health District in the 2nd floor  
Robert Palmer Conference Room.

# Portage County Combined General Health District Employees

## Administration

Joseph Diorio, MPH, MS, REHS, Health Commissioner  
Becky Lehman, MPH, MPA, CHES, Deputy Health Commissioner  
Dr. Mark Arredondo, MD, Medical Director  
Sarah Meduri, BSPH, SHRM-CP, Director of Personnel and Administrative Services  
Christina M. Jewell, Administrative and Account Clerk  
Olivia Card, MA, Epidemiologist

## Finance

Branden Burns, MBA, Director of Finance  
Lisa Miley, Grants Fiscal Manager  
Maria Gill, Account Clerk  
Julia Sykes, AAS, Account Clerk

## Community Health

Amy Cooper, BSND, RD, LD, Director of Community Health  
Joshua Sexton, BSPH, Accreditation Coordinator  
Kimberly Plough, MEd, CHES, Health Educator  
Katherine Holtz, BS, Health Educator  
Ali Selva, BS, Health Educator  
Robert Walker, BA, Public Health Emergency Preparedness Coordinator  
Rebecca Barreca, MSN, RN, Director of Nursing Programs  
Kirsten Orr, BSN, RN, Public Health Nurse  
Catherine Gellatly, MSN, RN, Public Health Nurse  
Philesia Condor, Clerk  
Danielle Steighner, RD, LDN, WIC Supervisor  
Rachael Stratton, BA, CLC, Breastfeeding Peer Helper & Clinic Assistant  
Briana Robison, MS, MPH, RD, LDN Health Professional 2  
Cynthia Hilbish, RDN, LD, CLC  
Lindy Goist, BSAS, RD, LD, CLC, Health Professional 3  
Renee Howe, Clinic Assistant  
Chelsea Kyer, Clinic Assistant  
Connie Suliot, BS, Clinic Assistant  
Victoria Caddell, Clinic Assistant  
Julie Seifert, BHE, CLC, Health Professional 1  
Kelly Rambo, BSND, CLC, Health Professional 3  
Abbie Fitch, BSAS, LD, Health Professional 2  
Anita Mackey, Clinic Assistant  
Amanda Casto, Clinic Assistant  
Shelley Toot, CLC, CLS, Peer Helper

## Environmental Health

Justin Rechichar, MPH, MHHS, REHS, Director of Environmental Health  
Amos Sarfo, MS, REHS, Environmental Supervisor  
William Duck, BA, REHS, Environmental Supervisor  
Natalie Menke, BS, REHS, Environmental Supervisor  
Emily Speck, BS, Registered Environmental Health Specialist  
Mike Spies, BS, Registered Environmental Health Specialist  
Leah Luli, BSPH, Environmental Health Specialist in Training  
Jim Meyer, BS, AA, Environmental Health Specialist in Training  
Andrea Arroyo, BS, Environmental Health Specialist in Training  
Nicole Lipchik BS, Environmental Health Specialist in Training  
Mike Bornemiss, BS, Environmental Health Specialist in Training  
Debbie Wine, Environmental Health Clerk  
Veronica Victoria, Environmental Health Clerk

*Portage County Combined General Health District (PCCGHD) provides comprehensive public health services throughout Portage County (\*excluding Kent City).*

*\*PCCGHD does provide Private Water and Septic System Evaluations by contract in Kent City. PCCGHD also provides WIC Services, Cribs for Kids Program, Child Fatality Review, Children with Medical Handicaps Program and Project DAWN Program to Kent City.*

# ADMINISTRATION & FINANCE

The Administration and Finance Divisions continuously strive to support and ensure the Health District is meeting the 10 Essential Services of Public Health. This is achieved through public health workforce planning, workforce development, financial and strategic planning.



## STAFFING

Employees	47
Contracted	3
Interns	14
New Hires	3
Staff Departures	4

## ALL STAFF TRAININGS

- Air Quality Training provided by Akron Regional Air Quality Management District

**NEW**

**PORTAGE COUNTY  
POP-UP PANTRIES**



**\*NEW starting May 2\***  
**Portage County Health District**  
1-3pm first Thursday of the month  
999 East Main St in Ravenna

**Kent State University DIX Stadium**  
1-3pm third Wednesday of the month  
2213 Summit St in Kent

**NEOMED**  
12-2pm fourth Monday of the month  
4209 St Rt 44 in Rootstown

Visit [akroncantonfoodbank.org/pop-food-pantries](https://akroncantonfoodbank.org/pop-food-pantries) before visiting. Dates may be rescheduled for holidays or school breaks.



## 2024-2026 STRATEGIC PLAN

### PRIORITIES:

Organizational Capacity & Infrastructure  
Population Health  
Technology, Data, & Information Management

# COMMUNITY HEALTH

The Community Health Division strives to help bridge the gap between Portage County residents and health care providers, social service agencies, community organizations, etc. in the provision of community health services such as immunizations, injury prevention programming, harm reduction programming, communicable disease investigations, environmental health education, and emergency preparedness.

## INJURY PREVENTION



28

Convertible/Booster  
Seats Distributed



10

Cribs For Kids/  
Pack n' Plays  
Distributed



247

Participants in  
SAIL (Stay Active &  
Independent for Life-  
Falls Prevention)



274

Project DAWN  
(Narcan) Kits  
Distributed



158

People Trained  
in Project DAWN

## COMMUNICABLE DISEASE



287

Child & Adult  
Immunizations



1,138

Communicable  
Disease Investigations

## COMMUNITY PROGRAMS & SERVICES



276

*monthly average*  
Children with Medical  
Handicaps Clients



31

Animal Bites/Rabies  
Exposures



30

Emergency Preparedness  
Trainings & Events

# ENVIRONMENTAL HEALTH

The Environmental Health Division focuses on prevention of disease through sanitation, safe food and water, proper disposal of waste, and promoting safe and healthy environmental conditions throughout Portage County.



415

Food Safety  
Inspections



5

Tattoo/Body Art  
Inspections



6

Solid Waste Inspections &  
Nuisance Complaints



22

Hotel  
Inspections



2

School  
Inspections



21

Swimming Pool &  
Spa Inspections



0

Mosquito Site  
Assessment and  
Trappings

## WATER QUALITY PROGRAMS

### Home Sewage Treatment Systems



49 Site & Soil Evaluations  
112 Design Plans / Layout Review  
9 Notice of Intent  
138 Inspections



### Chemical & Bacterial Water Sampling

18 Water Samples  
11 Field Inspections  
13 Site Evaluations



### Waste Water Nuisances

68 Inspections/Consults  
31 Data Collection/File Review/Reports



### Plumbing Program

132 Residential Inspections  
5 Commercial Inspections  
0 Clearwater Inspections  
0 Re-inspections



### Stormwater Program

102 ID & Verification Inspections  
41 Dry Weather Screenings  
22 IDDE Insp. & Surface Water Sampling



### Semi-Public Commercial Wastewater

2 Inspections  
3 Consultations

# WOMEN, INFANTS, & CHILDREN (WIC)

The Women, Infants, & Children (WIC) program is an Ohio Department of Health grant funded program that provides nutrition education & supplemental food program for women, infants, and children. The program provides highly nutritious foods, breastfeeding support, nutrition education, and connects families with other area resources.

WIC serves income eligible pregnant, breastfeeding and postpartum women, infants, and children to age 5.

PCHD administers WIC services in Portage and Columbiana County.



2,038

Participants Served  
in Portage County WIC



24

Community Outreach &  
Education Programs



1,925

Participants Served  
in Columbiana County WIC



6

Nutrition Education  
Programs

## BREASTFEEDING BENEFITS:

### Breastfeeding Mothers

Reduces their risk for:

- Ovarian cancer
- Breast cancer
- Type 2 diabetes

### Breastfed Infants

Have a reduced risk of:

- SIDS
- Lower respiratory infections
- Type 2 diabetes
- Asthma
- Obesity

### Workforce & Environmental

- Infants have less illness so mothers miss less work
- Less trash & plastic waste compared to formula & bottle supplies



2,821

Breastfeeding  
Education & Support



75.5%

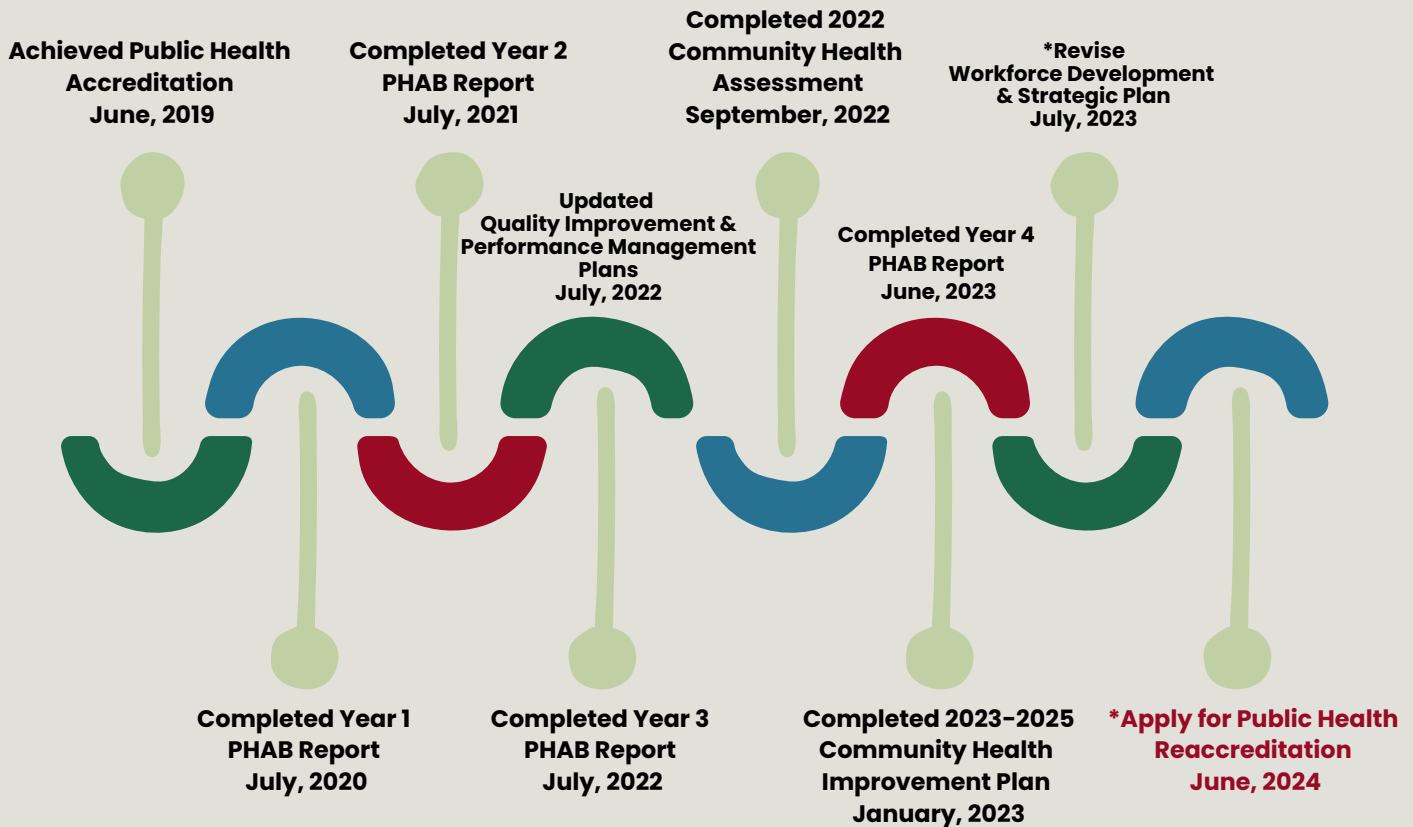
Breastfeeding  
Initiation Rate

*WIC supports all mothers and babies, regardless of their feeding decision. Staff are trained to promote and protect breastfeeding as the optimal feeding method for all infants. WIC staff provide the necessary resources and referrals to assist mother and baby in achieving their breastfeeding goals.*

# PUBLIC HEALTH ACCREDITATION

Public health accreditation measures a health district's performance against a set of nationally recognized, practice-focused and evidence-based standards. It focuses on the continual development, revision, and distribution of public health standards.

## Accreditation Timeline:



## COMMUNITY HEALTH IMPROVEMENT PLAN PRIORITIES



Chronic Disease



Family, Pregnancy, Infant, & Child Health



Mental Health, Substance Use, & Addiction

**Awarded National Accreditation  
for Public Health Excellence!**



HEALTH DISTRICT

